

# 2025 Prenatal-to-3 State Policy Roadmap



## A Roadmap to Strengthen Your State’s Prenatal-to-3 System of Care

Grounded in the science of the developing child and based on comprehensive reviews of the most rigorous evidence available, this Prenatal-to-3 State Policy Roadmap provides evidence-based policy solutions that foster the nurturing environments infants and toddlers need to thrive.

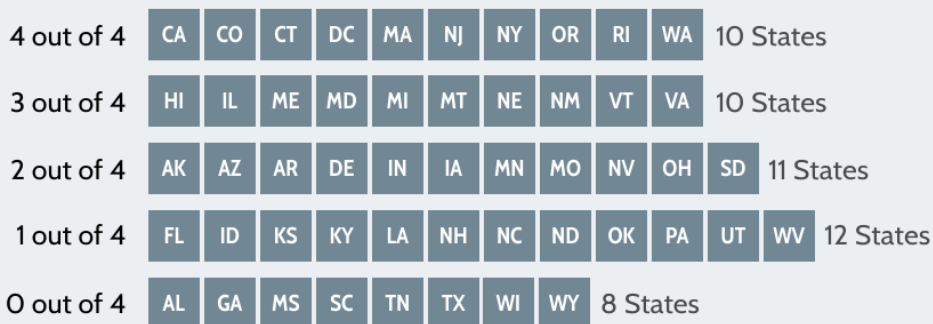
### The annual Roadmap includes:

- Policy profiles that summarize the research and related impacts on child and family outcomes, and the progress states have made towards full and equitable implementation, and
- State profiles that track implementation of each effective Roadmap policy and strategy, and 19 child and family outcome measures that assess the wellbeing of its infants and toddlers.

### Few States Are Doing It All, But Many Are Moving Forward

Although no states newly implemented effective Roadmap policies in the last year, many states made progress to improve access to effective policies and strategies.

### Number of Implemented Effective Roadmap Policies by State



■ State newly implemented at least one effective policy since October 1, 2024.

### Explore the United States Roadmap.

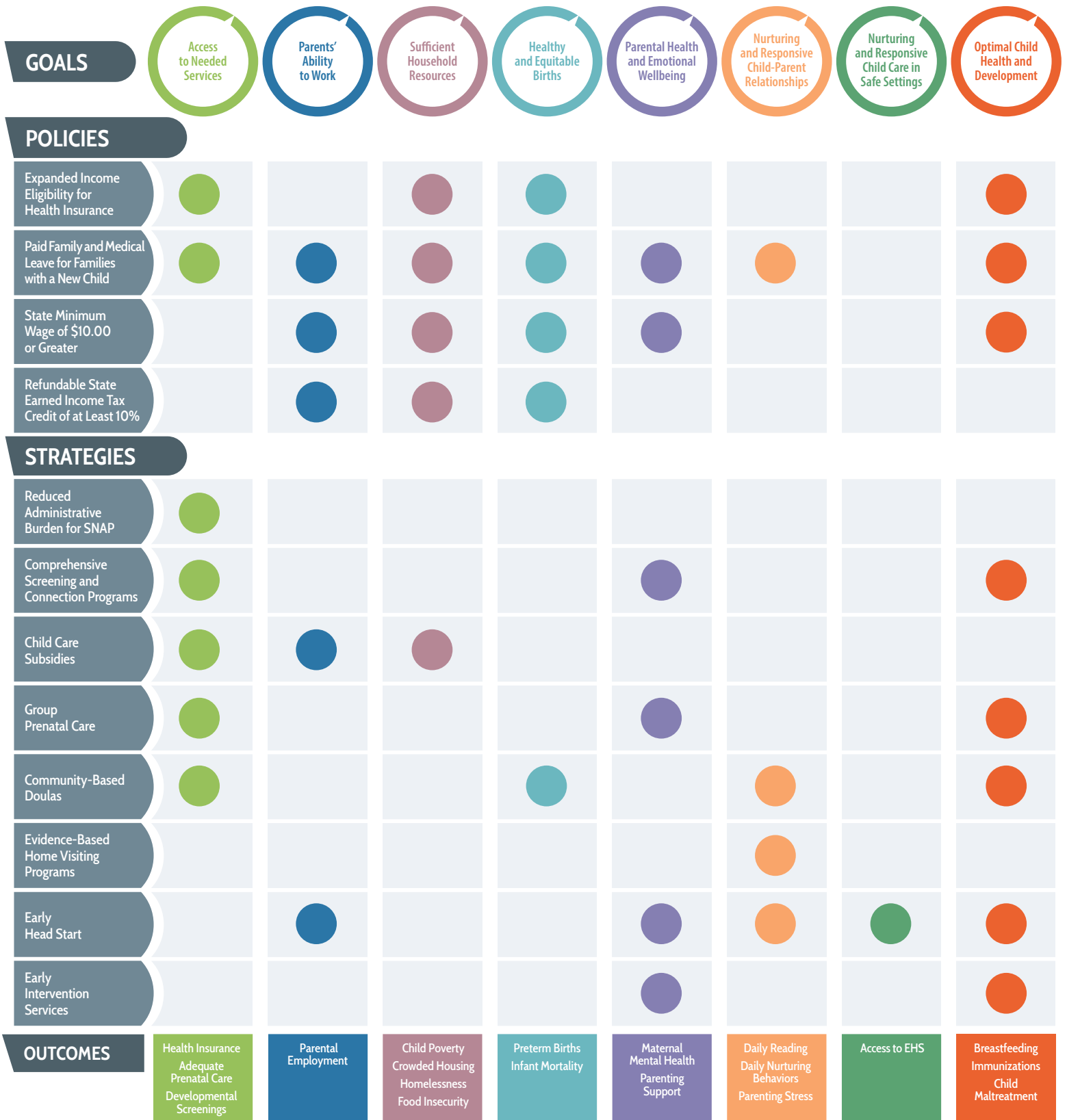
[pn3policy.org/roadmap/us](https://pn3policy.org/roadmap/us)

Contact us to inquire about our state services at [pn3center@vanderbilt.edu](mailto:pn3center@vanderbilt.edu) or submit a request for our services online at [pn3policy.org/state-services](https://pn3policy.org/state-services).



# Prenatal-to-3 State Policy Roadmap

Align Policy Goals with Effective Policy Solutions Proven to Impact Outcomes



# 2025 United States Roadmap Summary

UNITED STATES

Explore a summary of the United States progress implementing effective policies and strategies.

Number of States Fully Implementing Policy		2025 Progress Summary	
Expanded Income Eligibility for Health Insurance	41	No states newly implemented Medicaid expansion, however, Montana permanently reauthorized its Medicaid expansion.	
Paid Family and Medical Leave for Families with a New Child	10	Although no states newly implemented paid family and medical leave benefits this year, families in Rhode Island now have access to 7 weeks (up from 6 weeks) of paid family leave as of January 2025.	
State Minimum Wage of \$10.00 or Greater	30	No states newly implemented a state minimum wage of \$10.00 or greater, however, the minimum wage increased in 24 states in the last year.	
Refundable State Earned Income Tax Credit of at Least 10% of the Federal Credit	23	In tax year 2025, both Connecticut and Virginia increased the generosity of their state EITCs, although these EITCs already exceeded the 10% threshold.	

Number of States Implementing All Key Policy Levers		Number of States Implementing Each Individual Key Policy Lever					
Reduced Administrative Burden for SNAP	12	18	12-Month Certification Period	35	Simplified Income Reporting	44	Online Case Management
Comprehensive Screening and Connection Programs	4	6	Statewide Goal	21	Medicaid Funding	20	State Funding
Child Care Subsidies	7	15	Income Eligibility (85% SMI)	34	Limit Family Copayments	20	Equitable Reimbursement Rates
Group Prenatal Care	3	13	Enhanced Medicaid Reimbursement Rate	3	State Funding		
Community-Based Doulas	12	26	Medicaid Coverage	14	Fund Training and Credentialing		
Evidence-Based Home Visiting Programs	19	19	Medicaid Funding				
Early Head Start	19	19	State Support				
Early Intervention Services	4	21	Very Low Birthweight Qualification	6	At-Risk Qualification	36	Eliminate Family Fees

Policy Goal	Outcome Measure	Worst State	Median State	Best State	Rank
Access to Needed Services	% Low-Income Women Uninsured	40.7%	14.1% Median State	5.5%	
	% Births to Women Not Receiving Adequate Prenatal Care	25.9%	14.7% Median State	6.2%	
	% Children < 3 Not Receiving Developmental Screening	71.8%	58.3% Median State	41.3%	
Parents' Ability to Work	% Children < 3 Without Any Full-Time Working Parent	33.0%	23.5% Median State	12.3%	
Sufficient Household Resources	% Children < 3 in Poverty	26.7%	14.8% Median State	6.2%	
	% Children < 3 Living in Crowded Households	35.3%	16.0% Median State	7.6%	
	% Children < 3 Experiencing Homelessness	9.1%	2.5% Median State	1.1%	
	% Households Reporting Child Food Insecurity	16.2%	6.1% Median State	1.6%	
Healthy and Equitable Births	% Babies Born Preterm (< 37 Weeks)	15.0%	10.3% Median State	7.7%	
	# of Infant Deaths per 1,000 Births	8.9	5.7 Median State	2.9	
Parental Health and Emotional Wellbeing	% Children < 3 Whose Mother Reports Fair/Poor Mental Health	11.9%	7.3% Median State	2.3%	
	% Children < 3 Whose Parent Lacks Parenting Support	24.4%	13.8% Median State	6.2%	
Nurturing and Responsive Child-Parent Relationships	% Children < 3 Not Read to Daily	71.2%	59.0% Median State	38.6%	
	% Children < 3 Not Nurtured Daily	49.9%	39.9% Median State	27.7%	
	% Children < 3 Whose Parent Reports Not Coping Very Well	44.1%	35.8% Median State	27.1%	
Nurturing and Responsive Child Care in Safe Settings	% Children Without Access to EHS	95.5%	88.2% Median State	30.0%	
Optimal Child Health and Development	% Children Whose Mother Reported Never Breastfeeding	30.3%	16.2% Median State	6.9%	
	% Children < 3 Not Up to Date on Immunizations	39.6%	29.9% Median State	9.9%	
	Maltreatment Rate per 1,000 Children < 3	28.1	13.0 Median State	2.0	

Data marked with a \* should be interpreted with caution. For additional information regarding calculation details, data quality, and source data please refer to Methods and Sources.