

2025 Prenatal-to-3 State Policy Roadmap



A Roadmap to Strengthen Your State's Prenatal-to-3 System of Care

Grounded in the science of the developing child and based on comprehensive reviews of the most rigorous evidence available, this Prenatal-to-3 State Policy Roadmap provides evidence-based policy solutions that foster the nurturing environments infants and toddlers need to thrive.

The annual Roadmap includes:


- Policy profiles that summarize the research and related impacts on child and family outcomes, and the progress states have made towards full and equitable implementation, and
- State profiles that track implementation of each effective Roadmap policy and strategy, and 19 child and family outcome measures that assess the wellbeing of its infants and toddlers.

Few States Are Doing It All, But Many Are Moving Forward

Although no states newly implemented effective Roadmap policies in the last year, many states made progress to improve access to effective policies and strategies.

Number of Implemented Effective Roadmap Policies by State

4 out of 4	CA	CO	CT	DC	MA	NJ	NY	OR	RI	WA	10 States		
3 out of 4	HI	IL	ME	MD	MI	MT	NE	NM	VT	VA	10 States		
2 out of 4	AK	AZ	AR	DE	IN	IA	MN	MO	NV	OH	SD	11 States	
1 out of 4	FL	ID	KS	KY	LA	NH	NC	ND	OK	PA	UT	WV	12 States
0 out of 4	AL	GA	MS	SC	TN	TX	WI	WY	8 States				

 State newly implemented at least one effective policy since October 1, 2024.

Explore Delaware's Roadmap.

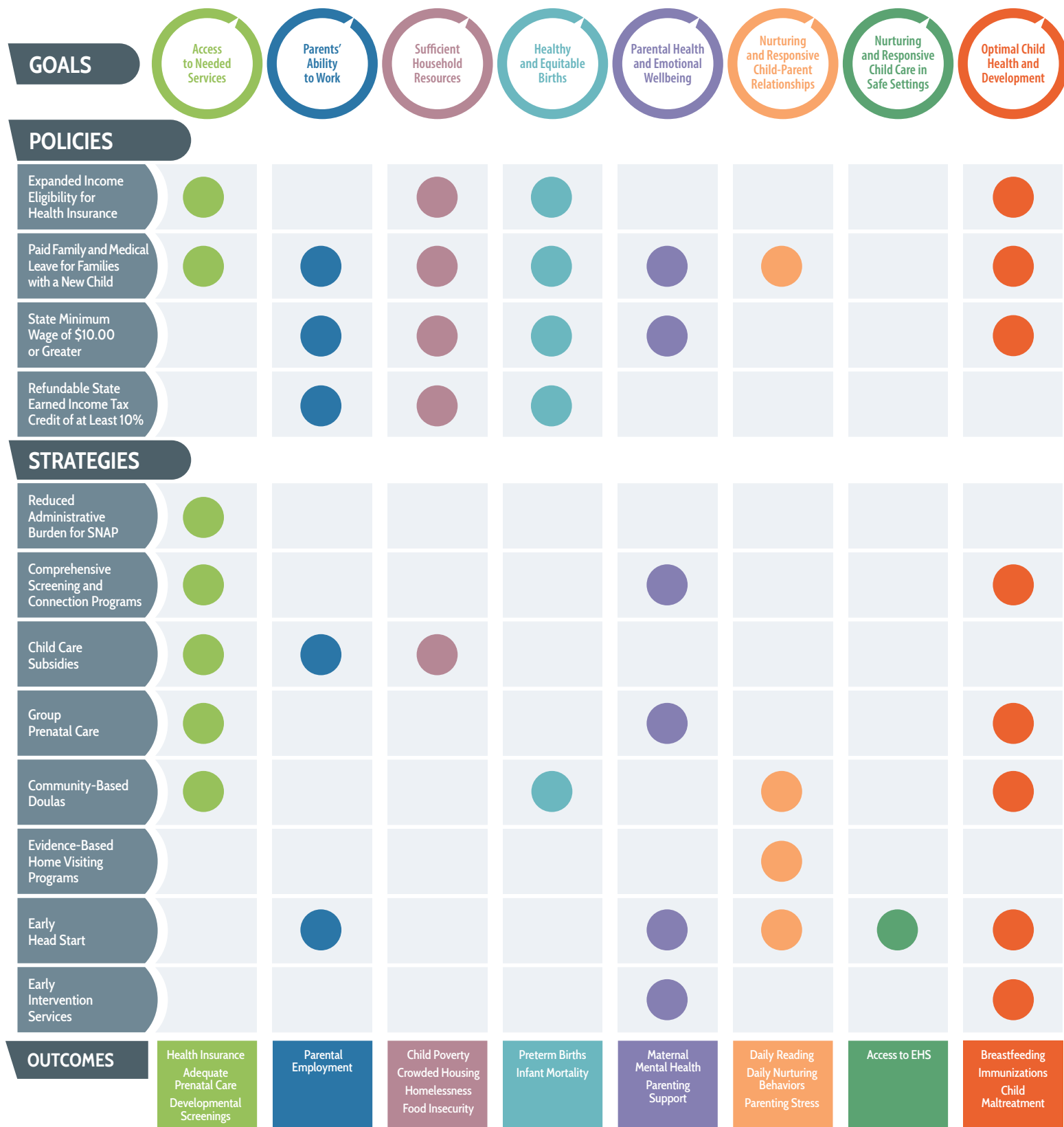
pn3policy.org/roadmap/de

Contact us to inquire about our state services at pn3center@vanderbilt.edu or submit a request for our services online at pn3policy.org/state-services.



Prenatal-to-3 State Policy Roadmap

Align Policy Goals with Effective Policy Solutions Proven to Impact Outcomes



2025 Delaware Roadmap Summary

DELAWARE

Explore a summary of your state's progress implementing effective policies and strategies.

Effective Roadmap Policy		2025 Policy Snapshot	
 Expanded Income Eligibility for Health Insurance to 138%	 138% of the FPL	Delaware has expanded Medicaid eligibility under the Affordable Care Act; thus, parents earning up to 138% of the FPL are eligible for Medicaid coverage in DE.	
Paid Family and Medical Leave for Families with a New Child	 0 weeks	Delaware does not currently have a statewide paid family and medical leave program, but Delaware enacted a 12-week program that will be fully implemented in 2026.	
 State Minimum Wage of \$10.00 or Greater	 \$15.00 per hour	The state minimum wage in Delaware increased from \$13.25 per hour to \$15.00 on January 1, 2025.	
Refundable State Earned Income Tax Credit of at Least 10%	 4.5% of the federal credit	Delaware has a partially refundable EITC. Eligible taxpayers may choose a refundable EITC equal to 4.5% of the federal credit or a nonrefundable EITC equal to 20% of the federal credit.	
 State has adopted and fully implemented the policy		 State has newly adopted and fully implemented the policy since October 1, 2024	
Effective Roadmap Strategy		2025 Strategy Snapshot	
Reduced Administrative Burden for SNAP		 12-month Certification Period	 Simplified Income Reporting  Online Case Management
Comprehensive Screening and Connection Programs		 Statewide Goal	 Medicaid Funding  State Funding
Child Care Subsidies		 Income Eligibility (85% SMI)	 Limit Family Copayments  Equitable Reimbursement Rates
Group Prenatal Care		 Enhanced Medicaid Reimbursement Rate	 State Funding
 Community-Based Doulas		 Medicaid Coverage	 Fund Training and Credentialing
 Evidence-Based Home Visiting Programs		 Medicaid Funding	
 Early Head Start		 State Support	
Early Intervention Services		 Very Low Birthweight Qualification	 At-Risk Qualification  Eliminate Family Fees
 State implemented all key policy levers		 State has met the criteria for the lever	
 State has met criteria for the lever since October 1, 2024		 State has not met the criteria for the lever	

As of September 30, 2025. See Methods and Sources for additional information at <https://pn3policy.org/methods-and-sources/>

Policy Goal	Outcome Measure	Worst State		Best State	Rank
Access to Needed Services	% Low-Income Women Uninsured	40.7%	16.1% DE	5.5%	31
	% Births to Women Not Receiving Adequate Prenatal Care	25.9%	14.0% DE	6.2%	22
	% Children < 3 Not Receiving Developmental Screening	71.8%	61.8% DE	41.3%	37
Parents' Ability to Work	% Children < 3 Without Any Full-Time Working Parent	33.0%	28.0%* DE	12.3%	42
Sufficient Household Resources	% Children < 3 in Poverty	26.7%	14.9%* DE	6.2%	27
	% Children < 3 Living in Crowded Households	35.3%	15.8%* DE	7.6%	24
	% Children < 3 Experiencing Homelessness	9.1%	3.6% DE	1.1%	37
	% Households Reporting Child Food Insecurity	16.2%	3.7%* DE	1.6%	9
Healthy and Equitable Births	% Babies Born Preterm (< 37 Weeks)	15.0%	10.4% DE	7.7%	28
	# of Infant Deaths per 1,000 Births	8.9	6.1 DE	2.9	32
Parental Health and Emotional Wellbeing	% Children < 3 Whose Mother Reports Fair/Poor Mental Health	11.9%	6.4% DE	2.3%	17
	% Children < 3 Whose Parent Lacks Parenting Support	24.4%	17.8% DE	6.2%	43
Nurturing and Responsive Child-Parent Relationships	% Children < 3 Not Read to Daily	71.2%	65.9% DE	38.6%	44
	% Children < 3 Not Nurtured Daily	49.9%	45.5% DE	27.7%	44
	% Children < 3 Whose Parent Reports Not Coping Very Well	44.1%	36.8% DE	27.1%	31
Nurturing and Responsive Child Care in Safe Settings	% Children Without Access to EHS	95.5%	87.5% DE	30.0%	22
Optimal Child Health and Development	% Children Whose Mother Reported Never Breastfeeding	30.3%	16.9% DE	6.9%	31
	% Children < 3 Not Up to Date on Immunizations	39.6%	31.1% DE	9.9%	31
	Maltreatment Rate per 1,000 Children < 3	28.1	5.5 DE	2.0	10

Data marked with a * should be interpreted with caution. For additional information regarding calculation details, data quality, and source data please refer to Methods and Sources.